



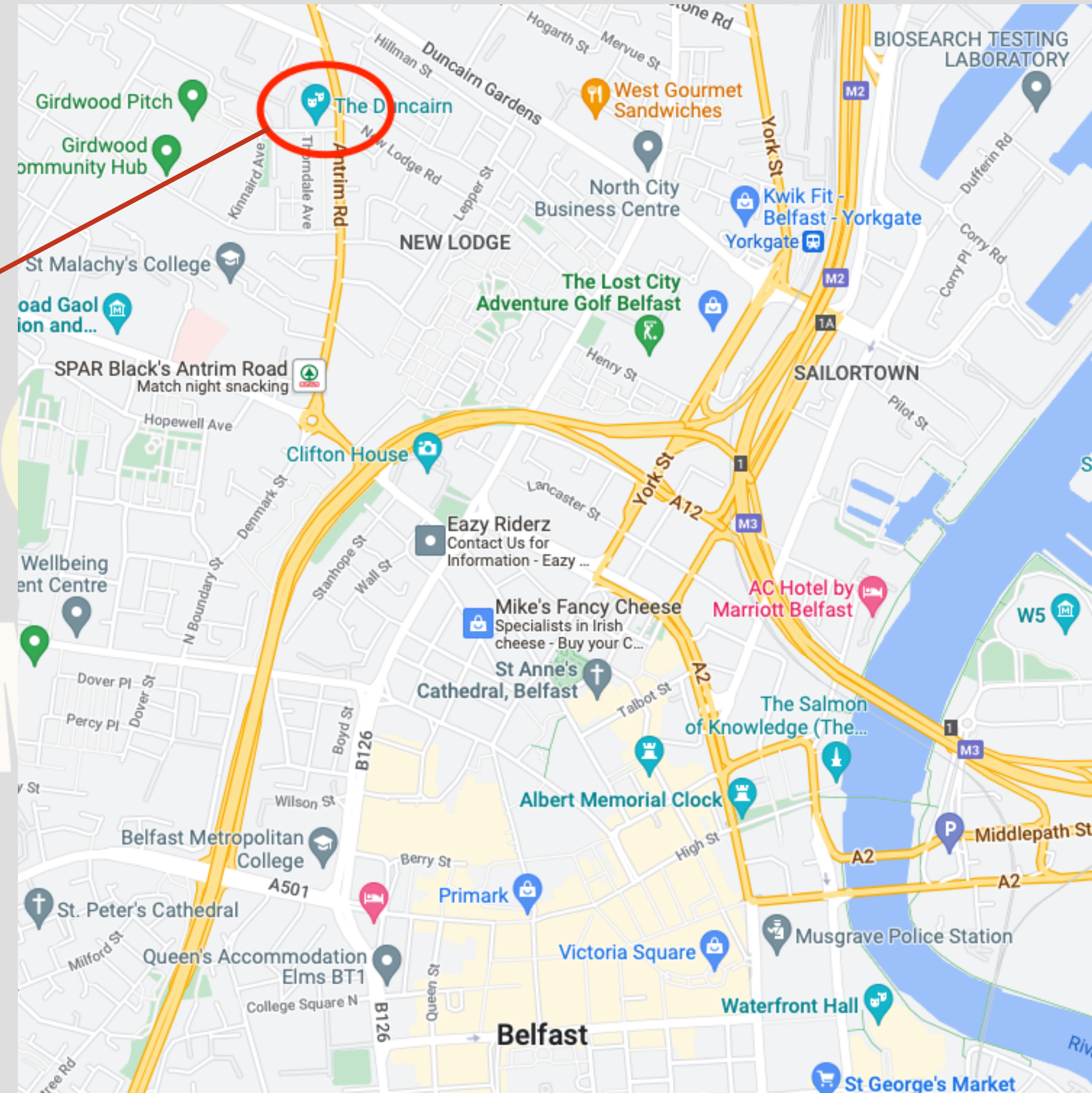
**THE DUNCAIRN**

# CONTENTS

Location .....	1
General information .....	2-3
The Building .....	4
Accessibility .....	5
Event Spaces .....	6
Technical Spec .....	7
Contacts .....	8

**THE DUNCAIRN**

# location



Cathedral Quarter	0.8 miles	18 min walk   4 min Drive
Carlisle circus A12 exit	0.4 miles	8 min walk   1 min Drive
City Airport	3.4 miles	7 min Drive
International Airport	14.8 miles	28 min Drive
Lnyon place Train Station	2.3 miles	8 min Drive   37 min walk
Yorkgate Train Station	0.8 miles	4 min Drive   16 min walk
Stenaline Terminal	3.5 miles	15 min Drive
bus from city centre	0.8 miles	10 min



# General information

## ACCESS

Backstage access for artists and loading is via side door with access to elevator (time to be pre arranged).  
main reception and cafe accessible from Duncairn Avenue entrance.

## MERCHANDISE

table will be provided and set up in the lobby, No fees charged for selling merchandise, please pre-arrange if a staff member is needed.

## GREEN ROOM/DRESSING ROOM

'Artist and staff only' green room located at the back of the theatre space, lounge area with water and selection of drinks provided for Duncairn shows. audio equipment storage.

## BOX OFFICE PERSONNEL

Duncairn staff. please prearrange box office personnel for external hire ins.

## WI-FI

Network: 174 Trust Yellowcom | Code: Letmeinplease1

## NEAREST ATM

SAUNDERS SPAR 203 ANTRIM RD, 203 Antrim Rd, Belfast BT15 2GW (100m away)

## TAXIS

VALUE CABS 028 9080 9080 | FON A CAB 028 9023 3333 | UBER | BCABS 028 9099 9000

## LOCAL AMENITIES

Our venue is fitted with secure bicycle locking facilities including a 'Belfast Bikes' rental docking station on the grounds of the venue. we are situated within a 20-minute walk to Belfast City Centre (Cathedral Quarter), and within 140 yards to a bus stop along the 1 and 12 metro services to and from Belfast City Centre and the Antrim Road.

An extensive guide to Belfast for visitors [www.gotobelfast.com](http://www.gotobelfast.com) Northern Ireland Tourism info [www.discovernorthernireland.com](http://www.discovernorthernireland.com)

## AIRPORTS

BFS - BELFAST INTERNATIONAL AIRPORT - 14.8 miles - 28min drive  
Belfast City Airport - 4.9 miles - 7 min drive

## PARKING

small car park in the main entrance with 2 Disabled parking bays. please arrange for loading in.

free on street parking on Duncairn Avenue and surrounding areas .

## Environmental Policy

Here at The Duncairn, we are always conscious of the current and on-going climate change issues facing our environment both locally and globally. We try to encourage shared transport, when possible, for our travelling artists, and for our in person audiences to try to opt for public transport, walking or cycling when attending events.

We implement a strict recycling policy within the venue including a no single use plastics rule, audiences are asked to bring reusable flasks and bottles when possible and make use of our reusable cups provided at each event.

We would like to thank all artist, participants, and audience members for their co-operation during their time at The Duncairn, if you'd like to know more about our current policy please check out our website.



# the building

## OUR STORY

located in the heart of North Belfast, just a stones throw from the city centre, this old church building that was once left abandoned has now been renovated and repurposed into a world class hub for culture and arts.

## HOW TO REACH US

### Walking

It takes less than 20 minutes to reach us from St Anne's Cathedral as it's not even a mile away. The route is easy to follow: walk straight from Donegall St into Clifton St, at Carlile Circus turn right into Antrim Rd and follow on to the Duncairn.

### By Bike

We have a Belfast bike station at our doorstep as well as some bike racks to park your own bike.

### By Bus

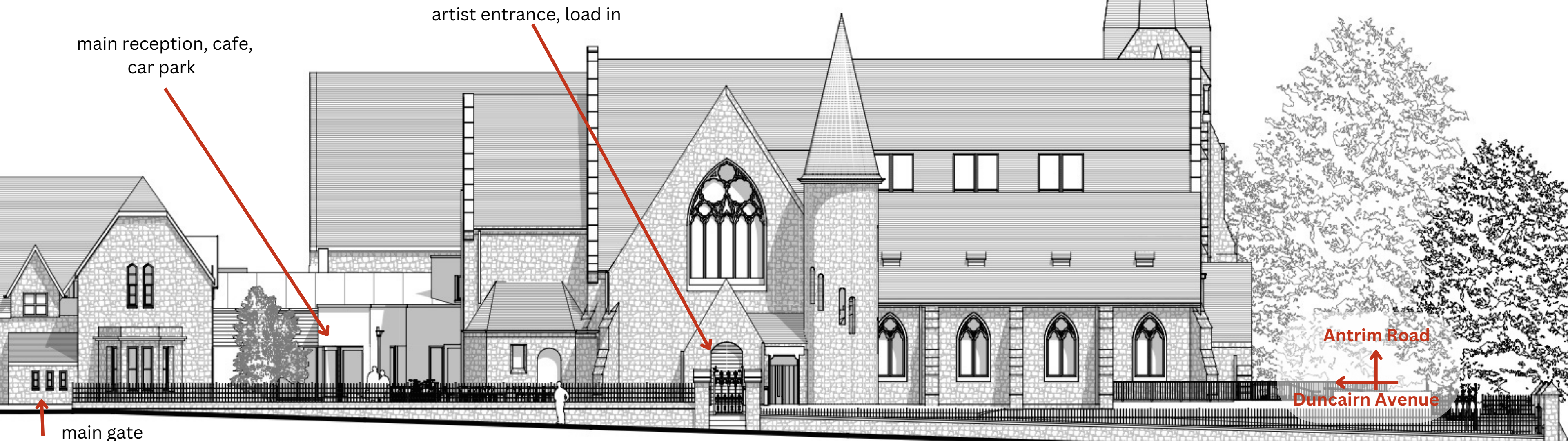
You can reach the Duncairn easily using the Translink bus 1a, 1e, 1f, 1g, 12a, 12c. The bus stop is only 130 yds away from our doorstep.

Timetables can be viewed at [www.translink.co.uk](http://www.translink.co.uk)

### By car

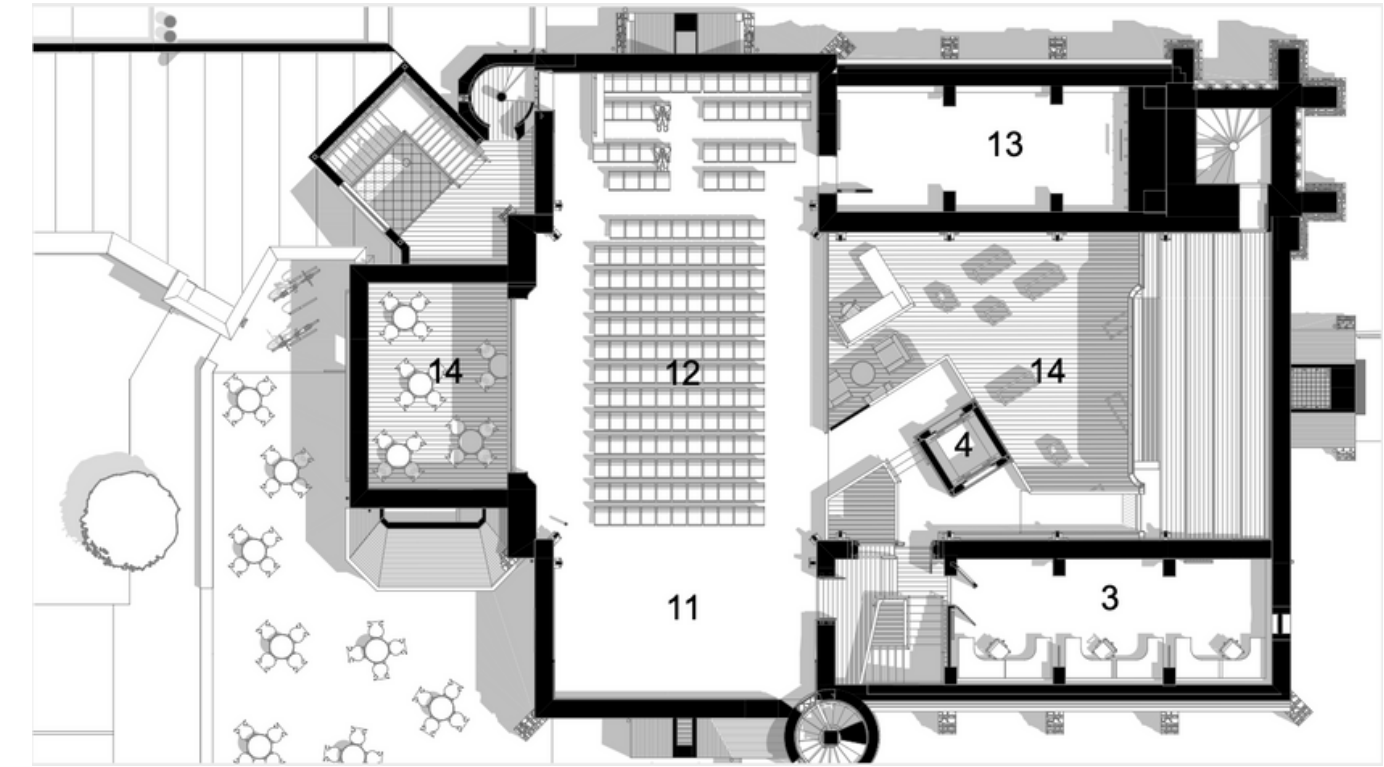
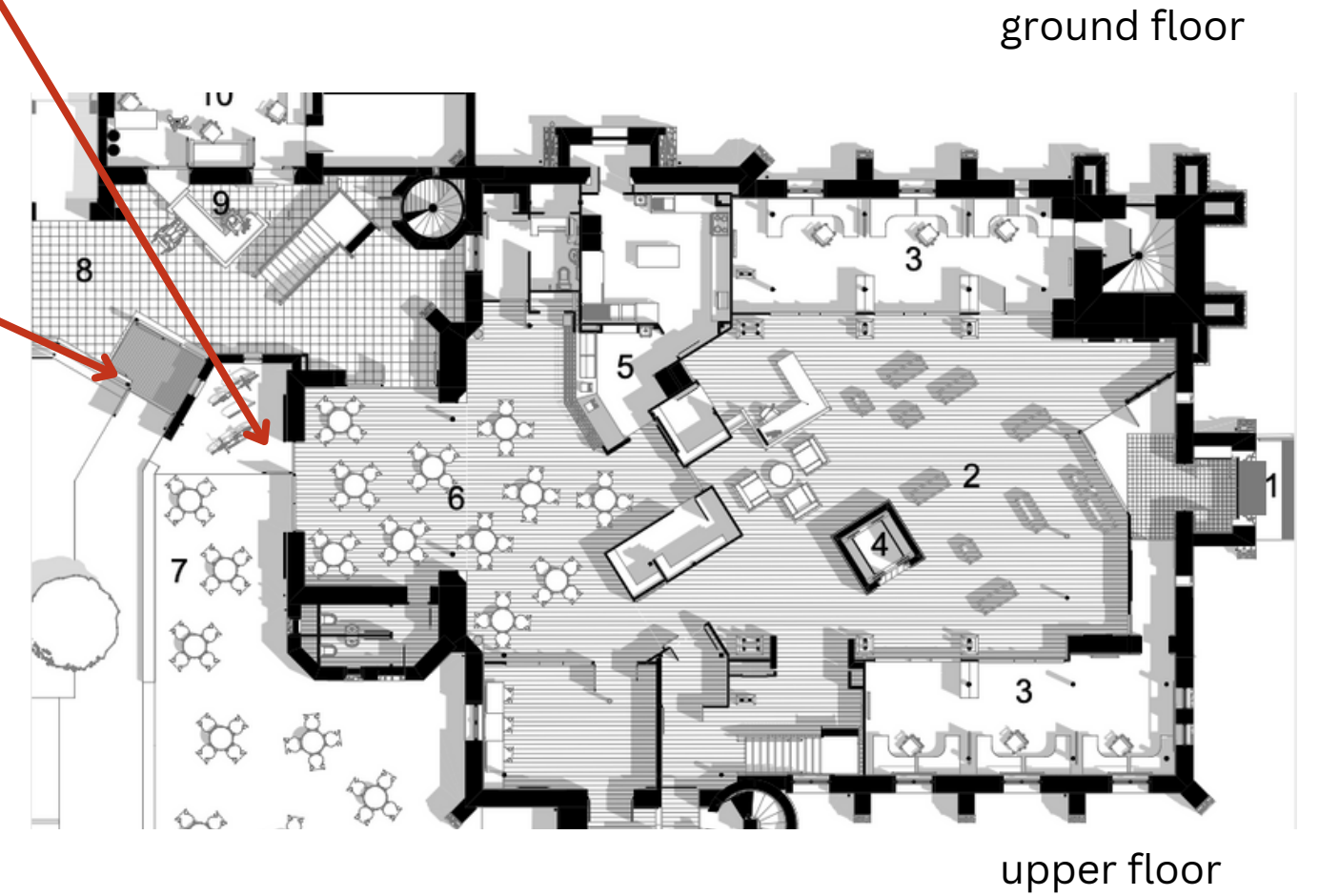
The Duncairn is very easy to reach, just a few minutes away from Belfast city centre.

The Duncairn is situated at the corner of Antrim Road with Duncairn Ave (BT14 6BP). The entrance is at the side of the building on Duncairn Ave.





# Acessbility

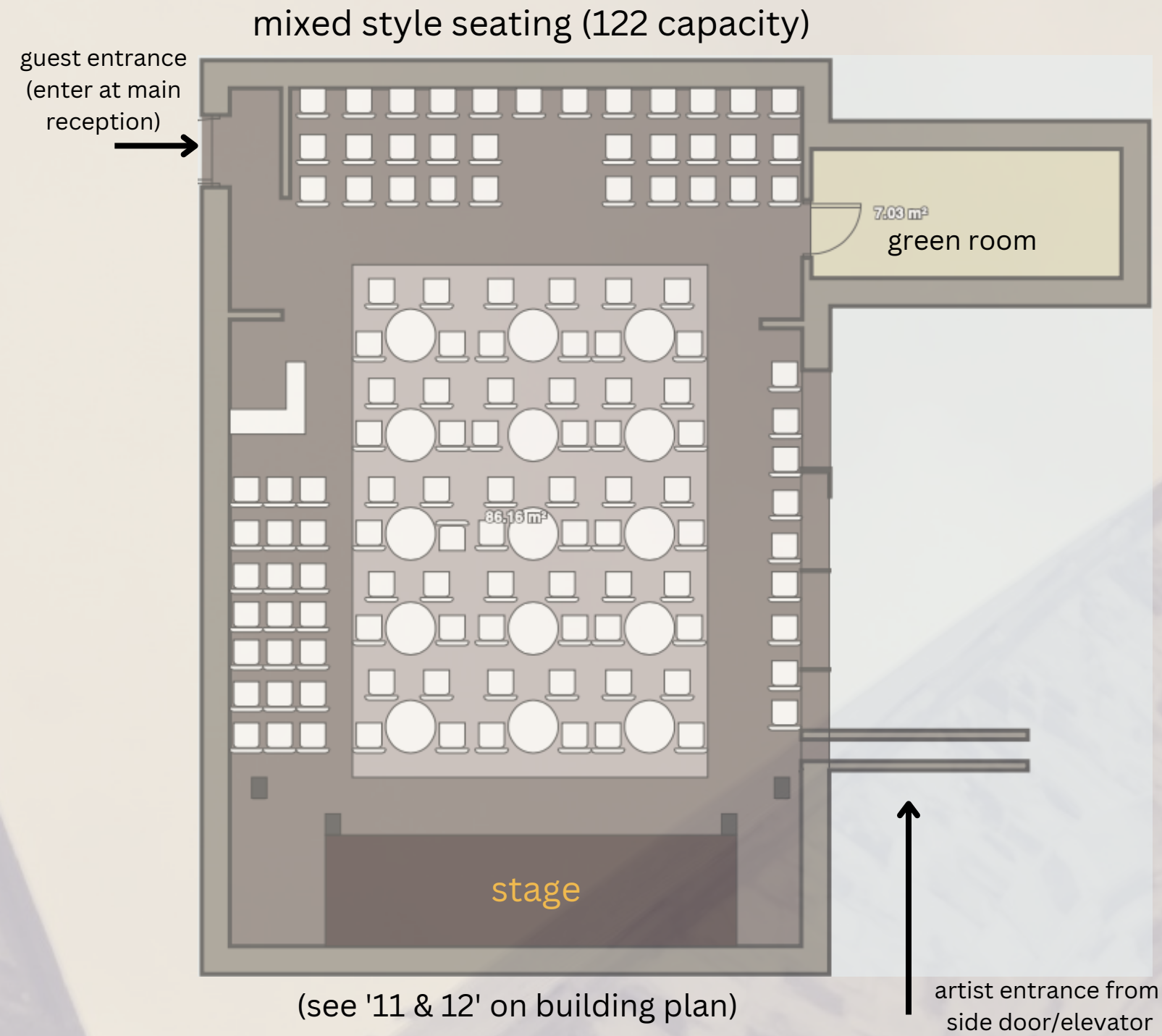


## MAIN ENTRANCE

the main entrance area has access to the main reception (leading to the other areas of the building) and immediate access to the Cafe, here you will also find disability parking, outdoor seating and a docking station for Belfast Bikes, being in close proximity to the city centre, this is a great way travel!



# performance spaces



## CAPACITY

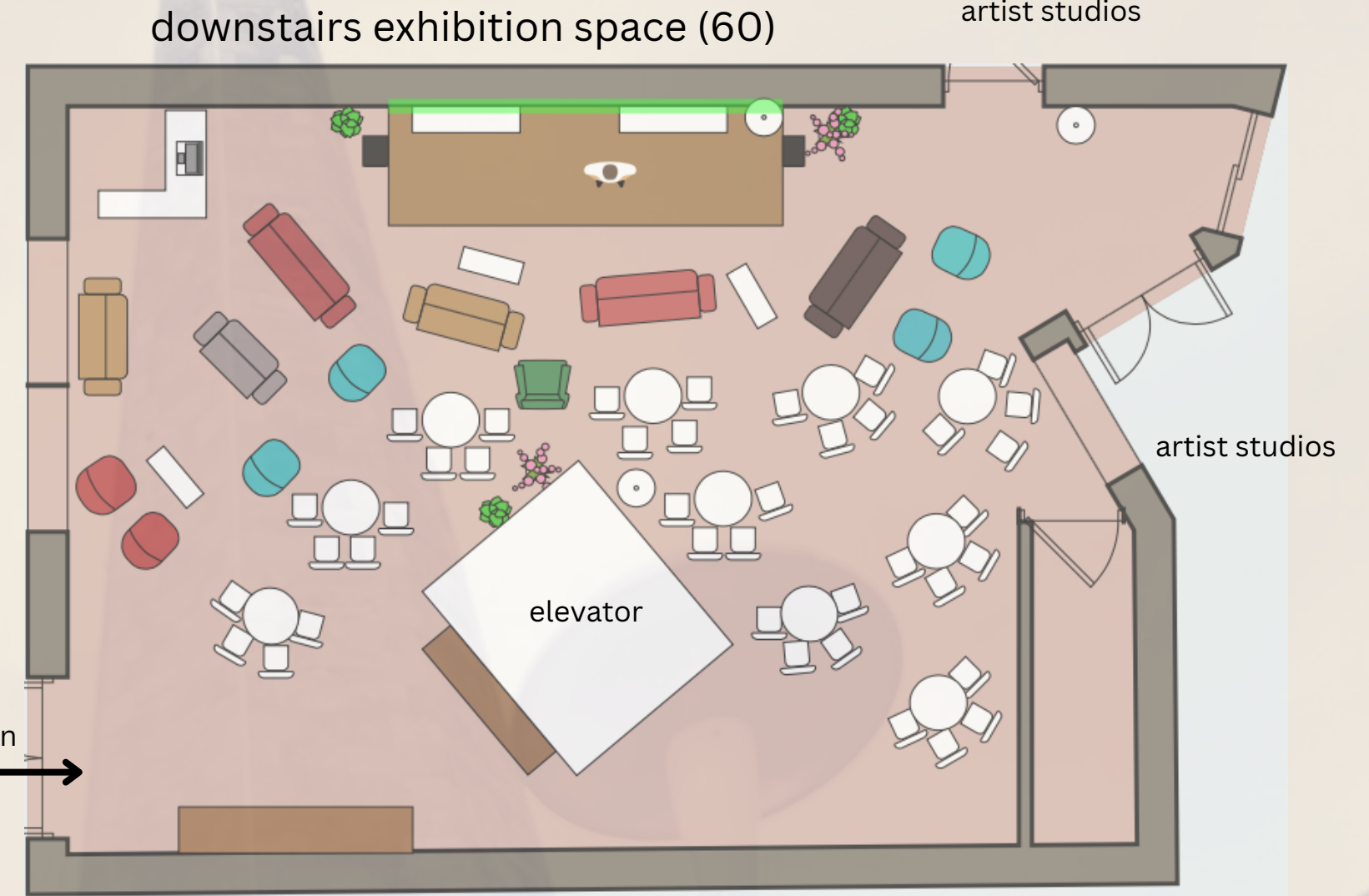
**(seating can be set up to match any number of guests)**

Full Cabaret Capacity: 100 + Guests

Mixed Cabaret/theatre: 120

Full Theatre seating capacity: 180

All seating is UNRESERVED



## CAPACITY

**full capacity: 60**

All seating is UNRESERVED

## EVENT SPACES

Our two main event spaces are located on the lower and upper floors of the building.

# tech V&A

## FOH

- Allen & Heath SQ6
- Allen & Heath AR2414 24ch stage box
- Electro-Voice EVF-1122D/94-BLK Loudspeaker x4
- **EVF-1151S** single 15" woofer **bass** system x2
- **Alto SXM112A** on stage monitor x6
- Electro-Voice Q1212 Amplifier x3
- EV DC-one 24-bit processor
- 24/8 I/O analog multicore stagebox
- Behringer x32
- Dynacord 1600 16 channel mixer

## lighting and visuals

- ETC Colorsource dmx lighting controller
- 14 x dimmers,
- 6 x Saber Spot RGBW LEDs,
- 5 x LED PAR
- 2 x moving heads
- 8 x Stairville LED PAR,
- 3 x ETC Source 4 par,
- 1 x ETC CE Source 4 jr.
- Avolites powercube
- fixed projector and screen above stage (HDMI and VGA)
- high quality portable projector and portable screen

## staging

- 9x Stageworx UniStage 2x1m (full stage 10x20ft)
- 3x movable raisers 2x1m
- blackstage curtains

## Mics/backline

- Rode NTG-2 Boom Mic x2
- Edwina Condenser Mic x2
- Neumann KMS105 Condenser Mic x3
- SM58 Dynamic Mic x9
- SM57 Dynamic Mic x4
- Audix D4 Dynamic Mic x2
- Sennheiser e604 Dynamic Clip On x1
- Sennheiser e865 Condenser Mic x1
- AT4040 Condenser Mic w/Case x1
- DPA 4099 Clip on Instrument Mic x1
- assortment of quality mic stands
- quality xlr cables
- BSS AR-133 DI Box x9
- Klark Teknik DI Box x3
- Ampeg BA115HP bass amp
- Peavy classic 30 guitar amp



# contacts

Ray Giffen  
Creative Director  
[ray@174trust.org](mailto:ray@174trust.org)

Jamie Bishop  
Arts and Music Assistant Programmer  
[jamie@174trust.org](mailto:jamie@174trust.org)


Luke O'Neill  
Assistant Digital Content Officer  
in-house audio engineer  
[luke@174trust.org](mailto:luke@174trust.org)



# THE DUNCAIRN

[www.theduncairn.com](http://www.theduncairn.com)

 028 90 747 114

 Duncairn Avenue, Belfast, Co Antrim  
BT14 6BP

